

Volunteering at LAMP CHC

LAMP Community Health Centre was founded and built by the hard work of community volunteers. Since 1976, when LAMP CHC first opened its doors, we have relied on volunteers in our programs, in administration and as members of our Board of Directors.

Our volunteers are:

- Tutors in reading, writing and math
- Parents connecting with other parents in the Early Years Centre
- Youth Leaders
- Students
- Fundraisers
- Office Assistants
- Leaders in program and strategic planning, in advocacy and policy development on our board and committees

HOURS OF OPERATION:

Monday - Thursday 8:30am - 8:00pm
Friday 8:30am - 5:00pm



Ontario's Community Health Centres



**Volunteers Build Strong Communities -
Strong Communities Build a Better World**

**Help build a better world,
become a volunteer
at LAMP CHC!**

LAMP Community Health Centre
185 Fifth Street, Etobicoke, Ontario M8V 2Z5
Tel: 416.252.6471 Fax: 416.252.4474
www.lampchc.org

"Building a Healthy Community"

For more information, please call:
416.252.6471 ext. 234

Checklist for Volunteering

Step 1



Call LAMP CHC 416.252.6471 ext. 234 about volunteer possibilities

-or visit -

www.charityvillage.com

www.volunteertoronto.ca

to see our latest volunteer job postings



Interested in volunteering?

**Please contact our
volunteer program
coordinator**

at

416.252.6471 ext. 234

or

dawna@lampchc.org

If emailing, please use "LAMP Volunteering" as the subject.

Step 2



Information sessions happen every 3rd Thursday of the month.

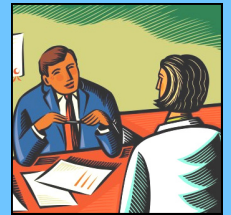
There you can find out about the different roles volunteers play at LAMP CHC and find out which opportunities best match your interest and skills.



Step 3



Volunteers are matched with positions to ensure the best experience for LAMP CHC and the volunteer.

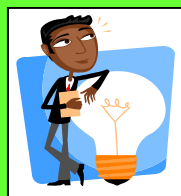


To help us do that you will be asked to fill out an application form, provide references, and come to an interview. Once you are placed in a volunteer position, we will provide further orientation and training for the task. If volunteers are required to complete a police check, LAMP CHC will cover the cost.

Step 4



Your ideas and feedback are important.



LAMP CHC welcomes the contributions of volunteers. We will listen to your input and give you feedback about your work. When you are ready for new challenges, we will help you find another match for your interests - either at LAMP CHC or in another community agency or activity.